

IEEE University of Sheffield Student Branch Joint IAS/PELS Chapter Newsletter Issue.3



THE 3RD EVENT OF THIS STUDENT BRANCH CHAPTER

ISSUE DATE: 03/SEPTEMBER/2016

The 3rd Event

‘The Steel City’- A Visit to Weston Bank Museum

Article by Zhongze Wu

Photos by Tianfu Sun

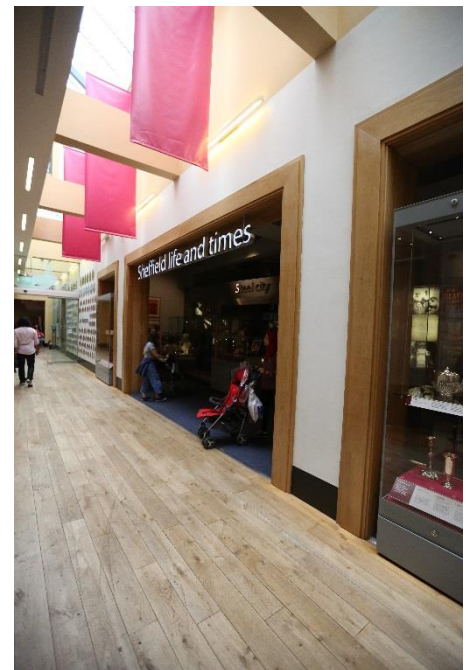
The IEEE University of Sheffield Student Branch Joint IAS/PELS Chapter held the 3rd event at 13:00 – 14:00, 21st August 2016 in the Weston Park Museum, which was created in 1998 as an independent charity to take over the running of the city’s non-industrial museums and galleries from Sheffield City Council.

This event was hosted by all the committee members. There were more than 18 students from different departments attended the event.

The currently special show is the ‘Made in Sheffield’. The below is a photo of knife and fork made by Electroplated Nickel and Silver around 1890. The other tool looks like hammer was named punches at that time.



All the visitors also enjoyed the beautiful view outside the Museum, where there are a wide range of beautiful flowers and plants.



The Student Branch Joint IAS/ PELS Chapter Overview

- IEEE Student Branch in the University of Sheffield, Sheffield, South Yorkshire, UK
- IEEE University of Sheffield Student Branch Joint IAS/PELS Chapter in the United Kingdom and Ireland Section, Sheffield, South Yorkshire, UK

Country: United Kingdom (UK)

IEEE Region: R8 (Europe, Middle East and Africa)

IEEE Section: United Kingdom and Ireland Section

4 IEEE Members
3 IEEE Graduate Members
28 IEEE Student Members
35 members in total
156th of IAS SBC in the world
301st of IAS Chapter in the world



COMMITTEE OFFICERS

Event Committee Chair:
TIANFU SUN
Membership Committee Chair:
CATHERINE WANG
Program Committee Chair:
HANLIN ZHAN
Publicity Committee Chair:
FERNANDO ALVAREZ
Secretary: ZHONGZE WU
Treasurer: RONGGUANG HU



MORE ABOUT IEEE

IEEE: <https://www.ieee.org/>
IEEE IAS: <http://ias.ieee.org/>
IEEE PELS: <http://www.ieee-pels.org/>

Contact us



FOR MORE INFORMATION

The Student Branch Counselor: Dr. Xiao Chen
The Student Branch Chapter Advisor: Dr. Guang-jin Li
The Student Branch Chapter Chairman: Chaohui Liu

Contact info

ieeesbsheffield@gmail.com

Facebook: [IEEE-Sheffield-Student-Branch-Joint-IAS-Pels-Chapter-320525248287622/](https://www.facebook.com/IEEE-Sheffield-Student-Branch-Joint-IAS-Pels-Chapter-320525248287622/)

Twitter: <https://twitter.com/IEEESheffieldSB>

University of Sheffield
Western Bank
Sheffield, S10 2TN, UK